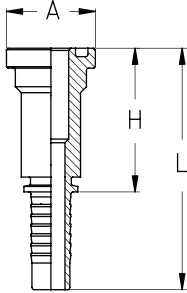


Perskoppelingen X serie

3



oa

SAE 3000 PSI

SFL

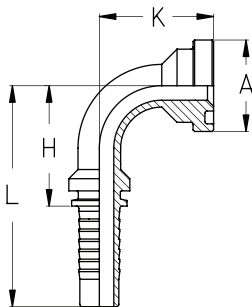
SAE FLENS 3000 PSI

GSS Artikel nr	Slangmaat			Flens Inch	Afmetingen (mm)						Max W.P. bar
	DN	Size	Inch		H	L	A				
	X08SFH-3-08	12	08	1/2"	1/2"	48,5	81,5	30,2			
X12SFH-3-08	12	08	1/2"	3/4"	52,5	85,5	38,1				350
X10SFH-3-08	12	08	1/2"	5/8"	49,3	82,3	34,0				350
X08SFH-3-10	16	10	5/8"	1/2"	46,5	82,5	30,2				350
X10SFH-3-10	16	10	5/8"	5/8"	49,3	85,3	34,0				350
X12SFH-3-10	16	10	5/8"	3/4"	52,5	88,5	38,1				350
X08SFH-3-12	20	12	3/4"	1/2"	36,0	77,0	30,2				350
X12SFH-3-12	20	12	3/4"	3/4"	53,5	94,5	38,1				350
X16SFH-3-12	20	12	3/4"	1"	59,5	100,5	44,5				350
X12SFH-3-16	25	16	1"	3/4"	61,0	116,0	38,1				280
X16SFH-3-16	25	16	1"	1"	60,5	115,5	44,5				280
X20SFH-3-16	25	16	1"	1 1/4"	65,0	120,0	50,8				280
X16SFH-3-20	32	20	1 1/4"	1"	61,0	122,0	44,5				210
X20SFH-3-20	32	20	1 1/4"	1 1/4"	65,5	126,5	50,8				210
X24SFH-3-20	32	20	1 1/4"	1 1/2"	70,0	130,0	60,3				210
X24SFH-3-24	40	24	1 1/2"	1 1/2"	70,5	141,0	60,3				185
X32SFH-3-24	40	24	1 1/2"	2"	77,5	147,5	71,4				185
X32SFH-3-32	50	32	2"	2"	77,0	153,0	71,4				170
X40SFH-3-32	50	32	2"	2 1/2"	77,5	153,5	84,1				170

SAE 3000 PSI 45"

SFL90

SAE FLENS 3000 PSI 90

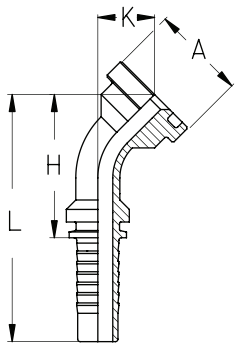


oa

GSS Artikel nr	Slangmaat			Flens Inch	Afmetingen (mm)						Max W.P. bar
	DN	Size	Inch		H	L	K	A			
	X08SFH90S-3-08	12	08	1/2"	1/2"	41	74	42	30,2		
X12SFH90S-3-08	12	08	1/2"	3/4"	41	74	47	38,1			350
X10SFH90S-3-08	12	08	1/2"	5/8"	41	74	44	34,0			350
X08SFH90S-3-10	16	10	5/8"	1/2"	49	85	46	30,2			350
X10SFH90S-3-10	16	10	5/8"	5/8"	49	85	49	34,0			350
X12SFH90S-3-10	16	10	5/8"	3/4"	49	85	52	38,1			350
X08SFH90S-3-12	20	12	3/4"	1/2"	58	99	51	30,2			350
X12SFH90S-3-12	20	12	3/4"	3/4"	58	99	57	38,1			350
X16SFH90S-3-12	20	12	3/4"	1"	58	99	62	44,5			350
X12SFH90S-3-16	25	16	1"	3/4"	74	129	69	38,1			280
X16SFH90S-3-16	25	16	1"	1"	74	129	69	44,5			280
X20SFH90S-3-16	25	16	1"	1 1/4"	74	129	70	50,8			280
X16SFH90S-3-20	32	20	1 1/4"	1"	92	153	78	44,5			210
X20SFH90S-3-20	32	20	1 1/4"	1 1/4"	92	153	87	50,8			210
X24SFH90S-3-20	32	20	1 1/4"	1 1/2"	92	153	88	60,3			210
X24SFH90S-3-24	40	24	1 1/2"	1 1/2"	108	179	101	60,3			185
X32SFH90S-3-24	40	24	1 1/2"	2"	108	179	104	71,4			185
X32SFH90S-3-32	50	32	2"	2"	142	218	134	71,4			170
X40SFH90S-3-32	50	32	2"	2 1/2"	142	218	143	84,1			170

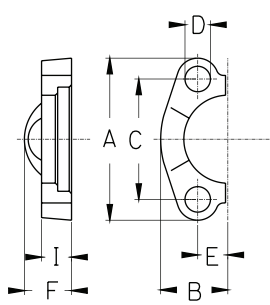
Perskoppelingen X serie

3



GSS Artikel nr	45° SAE J518 FLANGE - 3000 PSI - ONE PIECE FLANGIA 45° SAE J518 - 3000 PSI - INTERA										
	Slangmaat			Flens	Afmetingen (mm)						Max W.P.
	DN	Size	Inch	Inch	H	L	K	A		bar	
X08SFH45S-3-08	12	08	1/2"	1/2"	62,0	95,0	22,5	30,2			350
X12SFH45S-3-08	12	08	1/2"	3/4"	66,0	99,0	27,0	38,1			350
X10SFH45S-3-08	12	08	1/2"	5/8"	71,0	104,0	27,5	34,0			350
X08SFH45S-3-10	16	10	5/8"	1/2"	70,0	102,5	23,0	30,2			350
X10SFH45S-3-10	16	10	5/8"	5/8"	70,0	110,0	30,0	34,0			350
X12SFH45S-3-10	16	10	5/8"	3/4"	79,5	115,5	27,5	38,1			350
X08SFH45S-3-12	20	12	3/4"	1/2"	84,0	125,0	31,0	30,2			350
X12SFH45S-3-12	20	12	3/4"	3/4"	86,5	127,5	33,0	38,1			350
X16SFH45S-3-12	20	12	3/4"	1"	90,0	132,0	36,5	44,5			350
X12SFH45S-3-16	25	16	1"	3/4"	103,0	158,0	35,0	38,1			280
X16SFH45S-3-16	25	16	1"	1"	107,5	162,5	39,5	44,5			280
X20SFH45S-3-16	25	16	1"	1 1/4"	108,5	163,5	40,5	50,8			280
X16SFH45S-3-20	32	20	1 1/4"	1"	130,0	191,0	46,5	44,5			210
X20SFH45S-3-20	32	20	1 1/4"	1 1/4"	136,5	197,5	53,0	50,8			210
X24SFH45S-3-20	32	20	1 1/4"	1 1/2"	136,5	197,5	53,0	60,3			210
X24SFH45S-3-24	40	24	1 1/2"	1 1/2"	162,0	232,5	58,5	60,3			185
X32SFH45S-3-24	40	24	1 1/2"	2"	164,0	234,5	60,5	71,4			185
X32SFH45S-3-32	50	32	2"	2"	210,5	286,5	71,5	71,4			170
X40SFH45S-3-32	50	32	2"	2 1/2"	224	299,5	78,4	84,1			170

oa



GSS Artikel nr	Splitflenzen 3000 PSI										
	Slangmaat			Flens	Afmetingen (mm)						
	DN	Size	Inch	Inch	A	B	C	D	E	F	I
RX08SFC-3				1/2"	54	23	38,1	8,75	8,7	20	13
RX12SFC-3				3/4"	65	26	47,6	10,5	11,1	22	14
RX16SFC-3				1"	52,4	29,2	52,4	10,5	13,1	22	16
RX20SFC-3				1 1/4"	58,7	36,3	58,7	12	15,1	22	14
RX24SFC-3				1 1/2"	69,9	41,1	69,9	13,5	17,9	24	16
RX32SFC-3				2"	77,8	48,2	77,8	13,5	21,4	26	16

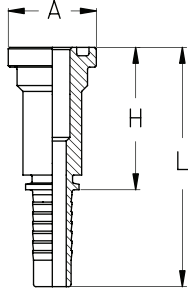
Perskoppelingen X serie

SAE FLENS 6000 PSI

SFS

SAE FLENS 6000 PSI

GSS Artikel nr	Slangmaat			Flens Inch	Afmetingen (mm)						Max W.P. bar
	DN	Size	Inch		H	L	A				
	X08SFH-6-08	12	08	1/2"	1/2"	49,5	82,5	31,7			
X12SFH-6-08	12	08	1/2"	3/4"	52,5	89,0	41,3				415
X08SFH-6-10	16	10	5/8"	1/2"	53,0	89,0	31,7				350
X12SFH-6-10	16	10	5/8"	3/4"	59,5	95,5	41,3				350
X08SFH-6-12	20	12	3/4"	1/2"	45,5	86,5	31,7				350
X12SFH-6-12	20	12	3/4"	3/4"	60,0	101,0	41,3				350
X16SFH-6-12	20	12	3/4"	1"	62,5	103,5	47,6				350
X12SFH-6-16	25	16	1"	3/4"	61,0	116,0	41,3				280
X16SFH-6-16	25	16	1"	1"	66,5	121,5	47,6				280
X20SFH-6-16	25	16	1"	1 1/4"	70,5	125,5	54,0				280
X16SFH-6-20	32	20	1 1/4"	1"	66,0	127,0	47,6				210
X20SFH-6-20	32	20	1 1/4"	1 1/4"	71,0	132,0	54,0				210
X24SFH-6-20	32	20	1 1/4"	1 1/2"	80,5	141,5	63,5				210
X24SFH-6-24	40	24	1 1/2"	1 1/2"	81,0	151,5	63,5				185
X32SFH-6-24	40	24	1 1/2"	2"	100,0	170,5	79,4				185
X32SFH-6-32	50	32	2"	2"	100,0	176,0	79,4				172

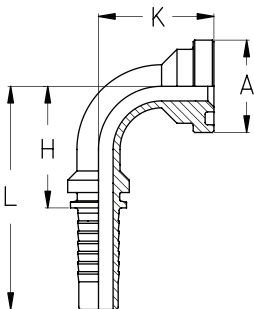


SAE FLENS 6000 PSI
90"

SFS90

SAE FLENS 6000 PSI 90"

GSS Artikel nr	Slangmaat			Flens Inch	Afmetingen (mm)						Max W.P. bar
	DN	Size	Inch		H	L	K	A			
	X08SFH90S-6-08	12	08	1/2"	1/2"	41	74	42	31,7		
X12SFH90S-6-08	12	08	1/2"	3/4"	41	74	50	41,3			415
X08SFH90S-6-10	16	10	5/8"	1/2"	49	85	47	31,7			350
X12SFH90S-6-10	16	10	5/8"	3/4"	49	85	55	41,3			350
X08SFH90S-6-12	20	12	3/4"	1/2"	58	99	52	31,7			350
X12SFH90S-6-12	20	12	3/4"	3/4"	58	99	62	41,3			350
X16SFH90S-6-12	20	12	3/4"	1"	58	99	70	47,6			350
X12SFH90S-6-16	25	16	1"	3/4"	74	129	70	41,3			280
X16SFH90S-6-16	25	16	1"	1"	74	129	75	47,6			280
X20SFH90S-6-16	25	16	1"	1 1/4"	74	129	82	54,0			280
X16SFH90S-6-20	32	20	1 1/4"	1"	92	153	84	47,6			210
X20SFH90S-6-20	32	20	1 1/4"	1 1/4"	92	153	90	54,0			210
X24SFH90S-6-20	32	20	1 1/4"	1 1/2"	92	153	96	63,5			210
X24SFH90S-6-24	40	24	1 1/2"	1 1/2"	108	179	102	63,5			185
X32SFH90S-6-24	40	24	1 1/2"	2"	108	179	118	79,4			185
X32SFH90S-6-32	50	32	2"	2"	142	218	137	79,4			172

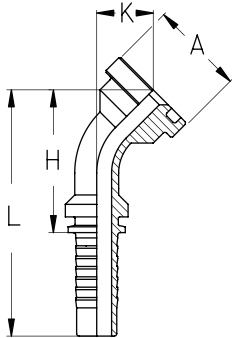


Perskoppelingen X serie

SAE FLENS 6000 PSI
45"

SFS45

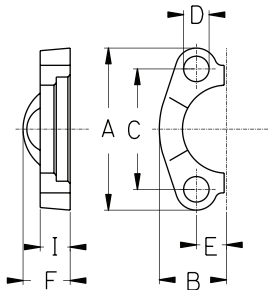
SAE FLENS 6000 PSI 45"



GSS Artikel nr	Slangmaat			Flens	Afmetingen (mm)						Max W.P.
	DN	Size	Inch	Inch	H	L	K	A			bar
X08SFH45S-6-08	12	08	1/2"	1/2"	63,0	96,0	23,5	31,7			415
X12SFH45S-6-08	12	08	1/2"	3/4"	68,5	101,5	29,0	41,3			415
X08SFH45S-6-10	16	10	5/8"	1/2"	76,0	112,0	23,5	31,7			350
X12SFH45S-6-10	16	10	5/8"	3/4"	81,5	117,5	29,5	41,3			350
X08SFH45S-6-12	20	12	3/4"	1/2"	83,0	124,0	29,5	31,7			350
X12SFH45S-6-12	20	12	3/4"	3/4"	89,5	130,5	36,0	41,3			350
X16SFH45S-6-12	20	12	3/4"	1"	95,5	136,5	41,5	47,6			350
X12SFH45S-6-16	25	16	1"	3/4"	108,5	163,5	40,5	41,3			280
X16SFH45S-6-16	25	16	1"	1"	112,0	167,0	44,0	47,6			280
X20SFH45S-6-16	25	16	1"	1 1/4"	116,5	171,5	48,5	54,0			280
X16SFH45S-6-20	32	20	1 1/4"	1"	134,0	195,0	50,5	47,6			210
X20SFH45S-6-20	32	20	1 1/4"	1 1/4"	138,5	200,0	55,0	54,0			210
X24SFH45S-6-20	32	20	1 1/4"	1 1/2"	143,0	203,5	59,0	63,5			210
X24SFH45S-6-24	40	24	1 1/2"	1 1/2"	162,5	233,0	58,5	63,5			185
X32SFH45S-6-24	40	24	1 1/2"	2"	166,0	244,0	70,0	79,4			185
X32SFH45S-6-32	50	32	2"	2"	212,5	289,0	73,5	79,4			172

3

Splitflenzen 6000 PSI



GSS Artikel nr	Slangmaat			Flens	Afmetingen (mm)						
	DN	Size	Inch	Inch	A	B	C	D	E	F	I
RX08SFC-6				1/2"	57	24	40,5	8,75	9,1	22	16
RX12SFC-6				3/4"	72	30	50,8	10,5	11,9	28	19
RX16SFC-6				1"	81	35	57,2	13	13,9	32	24
RX20SFC-6				1 1/4"	96	39	66,7	15	15,8	38	27
RX24SFC-6				1 1/2"	113	48	79,4	17	18,3	42	30
RX32SFC-6				2"	134	57	96,8	21	22,2	52	37